



Shelbourne Plaza - then and now

By Katherine Williams

One of the best features I like about living in the Mt. Tolmie region is that I'm never far from amenities. The Shelbourne Plaza has long provided services to the community.

The details of the following piece are taken from the article *Looking Back - at the Shelbourne Plaza*, by Lynette Stofer, printed in *The Islander*, 1982.

Stofer recalls when the Ellis Dairy Farm occupied the area from Cedar Hill Cross Road down to Pear Street. Before Shelbourne Plaza parking lot was built, a portion of Bowker Creek was visible.

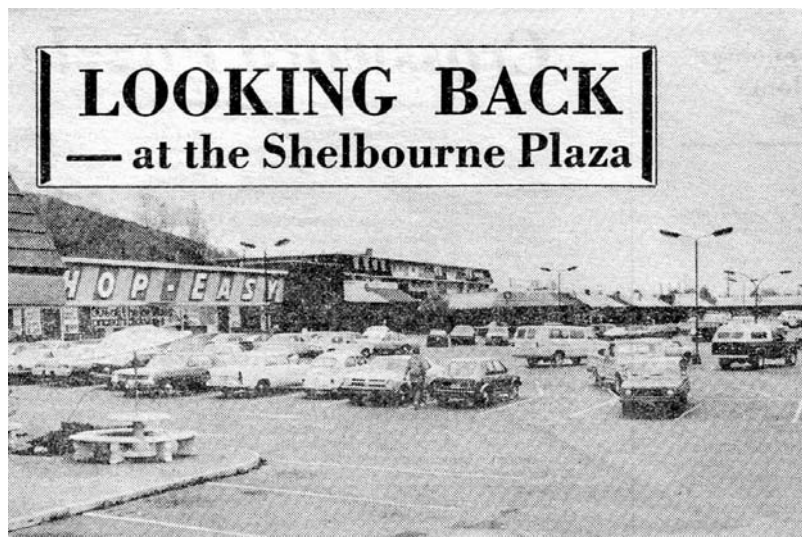
The Bowker Creek watershed, totalling 1,028 hectares, is composed of a gently sloping basin, with headwaters in the University of Victoria, McKenzie and Shelbourne area, and Cedar Hill Park and Golf Course. The main channel of Bowker Creek flows southeast from these headwater areas through the Shelbourne valley, past the Fort Street and Foul Bay Road area, and enters the sea at Oak Bay, near Glenlyon-Norfolk School.

Prior to Shelbourne Plaza opening, there were only two small grocery stores in the area - the Wooden Shoe, which was on Cedar Hill Cross Road between Stamboul

St. and Saint Aidan's St., approximately where the Framing and Art Centre is located today, and Wilson's Grocery on Shelbourne at Cedar Hill Cross Road, on the present site of the Coast Capital Credit Union.

The million-dollar Shelbourne Plaza celebrated its grand opening Jan. 28, 1960. The developer incorporated the word *plaza* into the name because plazas in ancient Spain had become community and shopping centres.

The grocery store that first occupied this location was the Shop-Easy. It was the anchor of the mall, but also the first store in the district to have evening shopping hours. George McIlveen, manager of the Shop-Easy, recounted some of the specials offered on its opening day. "Zee bathroom tissue, four rolls for 49 cents; leg of pork, 57 cents per pound; ground beef, two pounds for 89 cents; Aylmer tomato soup, eight tins for 80 cents; and Florida grapefruit, six for 49 cents. As a comparison, the average family income in



Shelbourne Plaza in 1982.

Photo credit: Bill Halkett

Continued on the next page

Victoria, based on the more typical single-income earner family of that time, was around \$150 per month.

Objections and a petition followed the proposal to have a liquor store become part of the mall. Successful lobbying resulted in the postponement of the liquor store for a few years, until 1974. Some older residents may recall the placement of the building, which now houses the BC Liquor Store, along the short cut through to Poplar St. To the right of the building was the Soho Club, a nightclub of sorts.

The Shop Easy closed in 1989. Fairway Market opened up in 1990 taking over the hardware store that had moved, as well as the Shop Easy location. A few years later, Fairway

expanded into the space vacated by the hair salon and Bernards Chocolatier. Now, in 2006, the grocery store is still the largest shop in Shelbourne Plaza, but there are many other shops and new additions all the time, Cobs bakery being the most recent.



Patty Mack,
President MTCA

President's Message

Wow, summer, fall, winter and now Christmas is once again upon us. I am not sure if, as we get older, we notice the passage of time moving progressively faster, or if it really is.

Since the last newsletter, the Mt. Tolmie Community Association hosted its annual Horner Park Picnic (July). Jo Ann Clar and her crew did a fabulous job once again – thank you. Many hot dogs were consumed and much laughter was heard from this fun gathering.

The website has been updated to a clear and easy handle: mtca.ca. Mark Adams will be adding more information, so make sure you check it out. Dora Jesson has been maintaining our community board and it continues to evolve as we find new ways to communicate with you. We want to get more input from our community – St. Aidan's Church, Campus View School, Shelbourne Village, and residents. We also want to encourage our youth to take part in the Association – we all need new ways to look at things.

In the New Year, watch the community bulletin board – on Fairway's outside wall next to the People's Drug Mart – and check the web page for updated information and events. On Jan. 17 at St. Aidan's Hall around 7 p.m., the Mt. Tolmie Community Association will be hosting a guest speaker, who will address how the appraisal process and market value relate to property assessments.

The Association wants to send out a giant thank-you to Richard and Sharon Graham and crew. I am sure many of you have built your family traditions around attending their fabulous Halloween event on Palo Alto. This is truly an event for all ages. This act of kindness and community is more of what our world needs. We look forward to next year.

We would like to welcome a few new streets to our association. The Mt. Tolmie Community Association noticed an area with no community association representation, so we have stepped in to include the streets of Pear St., Donnelly Ave., Cedar Ave., Stanhope Pl., and a few more houses along Richmond. Welcome.

I am fortunate to have such wonderful people working on the association. Thank-you for your time and your spirit.

This holiday season I hope you get the opportunity to give back to the community.

Merry Christmas and happy holidays to you and yours!

Neighbourhood Business Profile:

Peninsula Runners

By Matt Taylor

If you didn't notice *Peninsula Runners* when they first moved into the neighbourhood, May 27 2004, you've almost surely noticed their mural on the northern wall of Shelbourne Plaza.

Owner Dave Milne says he chose this area because he felt it was underserved in the specialty running and walking store field. He and his staff have sponsored and organised a number of



local runs in the two and a half years the store has been open. All levels of runner and walkers are welcome in the store and can benefit from the knowledge of Dave and his staff – truly some of Canada's best runners. Staff member Eric Kiauka, for example, ran the 1,500 metre in 3:47, the steeplechase in 8:48, and the 5,000 metre in 14:16.

A pair of correctly fitting runners is a big step in the right direction for pleasant and injury free exercise. Staff can help you find the right shoes and answer questions about which shoes are best for your preferred activity.

Peninsula Runners organizes running clinics on Wednesday nights and Sunday mornings as a supportive environment for people who are interested in running regularly. Choosing the right clinic will offer you a more enjoyable experience and help prevent injuries, and all of the staff is more than capable of helping meet your needs.

The clinics fire up again on Jan. 10. Contact the store for more details. Running clinics in the Mt. Tolmie area are so popular that a frustrated resident complained to the police about having to wait five minutes for a large group of runners to pass before she could back out of the driveway!

The Mt Tolmie Community Association is happy to welcome *Peninsula Runners* to the neighbourhood.

| | |
|-----------------------------------------------------------------------------------|-------------------------------------------------------------------------------|
| Peninsula Runners | Store Hours: |
| 3659 Shelbourne Street (in Shelbourne Plaza) | Mon–Sat 10:00 a.m. – 6:00 p.m. |
| Phone: 384-4786 (384-IRUN) | Sun Noon – 5:00 p.m. |
| Email: peninsularunners@telus.net | http://www.peninsularunners.com |

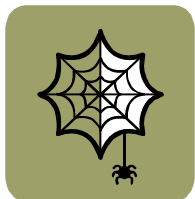
Events

- Guest Speaker: James Botten, AACI, has 27 years of active appraisal experience for assessment purposes. He will address how the appraisal process and market value relate to property assessments on January 17, at 7:00 p.m. at St. Aidan's Hall. The talk is expected to last approximately half an hour with time for questions.
- Senior Celebration Festival March 9, 2007

Come celebrate the achievements of seniors in our community! Over 60 exhibitors including artists, athletes, authors, hobbyists, crafters, artisans, actors, dancers, musicians and more. Demonstrations, interactive exhibits. All day entertainment. Presented by Senior Living magazine. 10 a.m. - 4 p.m. Pearkes Recreation Centre, 3100 Tillicum. Free parking. Admission by donation. Call 383-0133 for more info.

An executive board member noticed that there were several streets in the Mt. Tolmie neighbourhood that were not part of a community association. After discussing this with nearby association and the municipality, the Mt. Tolmie Community Association is extending a warm welcome to Pear St., Donnelly Ave., Stanhope Pl., Cedar Ave., and the nearby houses on Richmond Rd.

We will be looking for volunteers in this area to deliver newsletters and flyers for community events. Newsletters come out several times during the year. Owing to Jo Ann moving out of the Mt. Tolmie area, there is a position available for coordinating social events. Please contact Patty Mack or Marlene Bergstrom if you are interested in participating.



**We're on
the web!**
mtca.ca

The Association extends a heartfelt thank-you to all the volunteers who help make this community a community – the assistants at events and the newsletter carriers to name only a few of the many.

Delivering flyers and newsletters to condos has been a challenge due to accessibility. The Association would like to reach out to everyone in the community so if you know people living in the condos or happen to reside in a condo, please contact Katherine Williams to receive newsletters for your building.

Mt. Tolmie Community Association Executive

Mail: c/o 1735 Kingsberry Crescent, Victoria BC, V8P 2A8

Patty Mack, President, 721-2497

Marlene Bergstrom, Vice-President, 472-2246

Gil Bernard, Treasurer, 721-3731

Jennifer Duhamel, Secretary, 384-4818

POSITION AVAILABLE, Social Events

Joe Mogentale, Safety, 472-0975

Brad Crewson, SCAN Representative, 477-7678

Dora Jessen, UVic Representative, 386-2747

Robert Hinkley, Planning/Development, 382-3063

Peter Spurr, Planning/Development, 477-7678

Matthew Taylor, Planning/Development, 477-8960

Bob Martyn, Member at Large, 477-3482

Melody Andersson, Member at Large, 721-2145

Gayla Baranieski, Member at Large, 477-2198

Mark Adams, Website, 477-1815

Katherine Williams, Newsletter, kashwi@gmail.com